



**TFT DISPLAY (M) SDN BHD (587382-H)**  
 368-4-6, BELLISA ROW, 10350 JALAN BURMA,  
 GEORGETOWN, PENANG, MALAYSIA  
 TEL: +604-2263778 FAX: +604-2263778  
 Website: www.tft-malaysia.com

# Dynamic Digital Signage Solution

➤ Manage your contents as easy as 1-2-3

## WHAT IS DIGITAL SIGNAGE?

- Electronic display that shows information, advertising, entertainment and other messages
- Effective communication tool in any places
- Deliver relevant, meaningful & interactive info
- Can be controlled electronically using computer to remotely change and control the contents



## WHY USE DIGITAL SIGNAGE?

- Excellent advertising & informational media
- Interactive & higher impact than traditional banner, poster or sign
- Fast, reliable and simple way to get your message across to your specific target audience
- Content can be derived from Images, PowerPoint slides, Videos and Texts



## WHERE IS DIGITAL SIGNAGE TODAY?



- Shopping Malls
- Retail Stores
- Bank
- Train Stations
- Restaurants
- Showroom
- Hotels
- Restaurants
- Airports

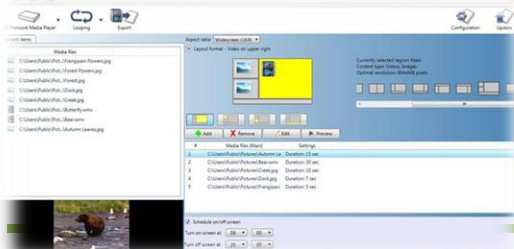
## BENEFITS

- Full Flexible Presentation Scheduling
- Content Management System - Creation, Scheduling and Distribution
- Multi zone or single zone screen view
- RSS feeds
- Web based administration
- Easy management of videos, animations and images
- Pre-schedule power on/off time
- Remotely monitoring of player activities & status

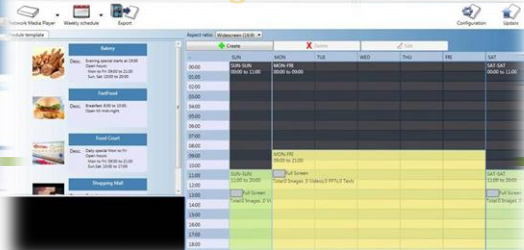
## AS EASY AS 1-2-3

- Start your own Digital Signage in 3 easy steps:
  - Step 1: Install & setup the hardware
  - Step 2: Design & schedule your content
  - Step 3: Distribute your content from any computer over the internet remotely

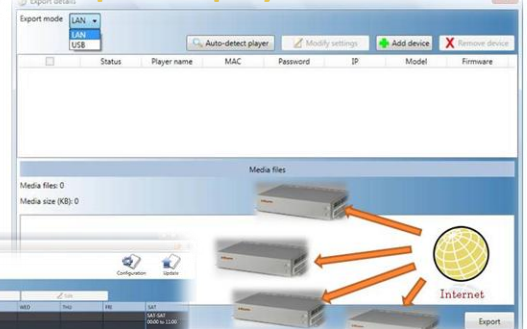
### 1. Select Contents Files



### 2. Scheduling



### 3. Export to players



# Technical Specification

## POPAI Screen Media Standards Support

- S1 (JPEG 480p baseline)
- S2 (JPEG 720p baseline)
- S4 (MPEG L2 audio)
- S5 (MP3 audio, 384Kbps)
- S6 (MPEG-1 SIF, 3Mbps CBR)
- S7 (MPEG-1 480p, 10Mbps CBR)
- S8 (MPEG-1 720p, 15Mbps CBR)
- S9 (MPEG-2 480p, 6Mbps CBR)
- S10 (MPEG-2 720p, 12Mbps CBR)
- E1 (PNG 24bpp+alpha, 480p)
- E2 (PNG 24bpp+alpha, 720p)
- E4 (VC-1/WMV9, MP@ML, 720p)
- E7 (MPEG-4 ASP, 480p, 10Mbps CBR)

## RSS Support

- RSS 1.0, 2.0 and ATOM
- Requires optional Signage Express Central Management Server

## Playback Control

- Alphabetical looping
- Playlist script control
- Signage Express Central Management Server

## Content Management

- LAN/USB/CF – Signage Manager Express (LAN Edition)
- WAN – Signage Express Central Management Server – WEB Edition (optional)
- USB media file update

## Physical Connectors

- DVI-I (up to 1080p)
- VGA (with DVI-to-VGA adapter)
- Unamplified RCA audio L/R
- USB x 2

## Local Storage

- HMP: 80GB Hard Disk Drive (holds approx. 30 hours of HD content)
- HMP-CF: 4GB SLC High Performance CF Card (holds approx. 105 minutes of HD content)

## Accessories

- DVI-to-VGA adapter
- RCA male-3.5mm female audio cable
- 3.5mm male-male audio cable
- Mounting plate set
- Ethernet cable

## Power

- Input: 12V @ 2A DC
- Consumption: typical 7W (HMP-500S) / 5W (HMP-505S)

## Environmental

- Operating temperature: 0 to 40°C
- Humidity: 5 to 85% @ 40°C, non-condensing

## Dimensions (WxDxH)

- 9.0" x 6.1" x 1.6" (230mm x 155mm x 40mm)

## Weight

- Approx. 1.4kg (3lbs) (HMP-500S) / 1.14kg (2.5lbs) (HMP-505S)

## Certifications

- CE/FCC
- RoHS
- IEC60068-2-64 Operating/ IEC60068-2-6 non-Operating Vibration Inspection Passed